

Rab41

Catalog Number: 21084

Gene Symbol: RAB41

Description: Anti-Rab41 Rabbit Polyclonal Antibody

Background: Rab GTPases are Ras-like small molecular weight GTP binding proteins that are involved in various steps along the exocytic and endocytic pathways. Rab41 is widely expressed in brain, testis, lung, heart, ovary, colon, kidney, uterus and spleen.

Immunogen: A synthetic peptide from the N-terminal region of human Rab41 protein

Tested Applications: ELISA, WB, IHC, IP

Recommended Dilutions:

ELISA	1:100-1:5000
WB	1:100-1:1000
IHC	1:10-1:500

Concentration: 0.2 mg/ml

Host: Rabbit

Clonality: Polyclonal

Purity: Purified from serum

Format: Liquid

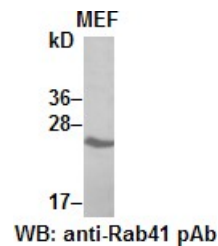
Preservative: No

Constituents: PBS (without Mg²⁺ and Ca²⁺), pH7.4, 150 mM NaCl, 50% glycerol

Species Reactivity: Rab41 antibody recognizes Rab41 proteins from vertebrates.

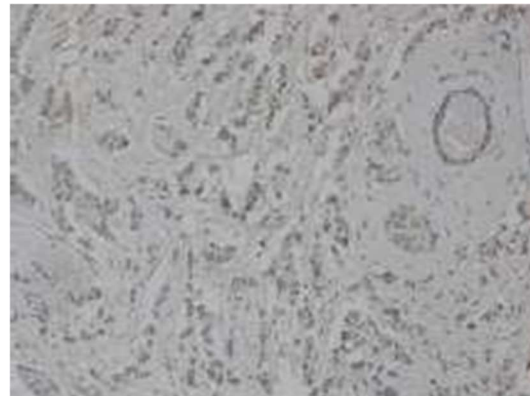
Storage Conditions: Store at -20°C. Avoid freeze / thaw cycles

Western blot:



MEF whole-cell lysate was used for Western blot with anti-Rab41 polyclonal antibody (Cat. # 21084).

Immunohistochemistry:



Immunohistochemical staining of formalin-fixed paraffin-embedded breast carcinoma using the affinity purified anti-Rab41 polyclonal antibody (Cat. # 21084) with 1:50 dilution

FOR RESEARCH USE ONLY. NOT FOR DIAGNOSTIC APPLICATIONS